

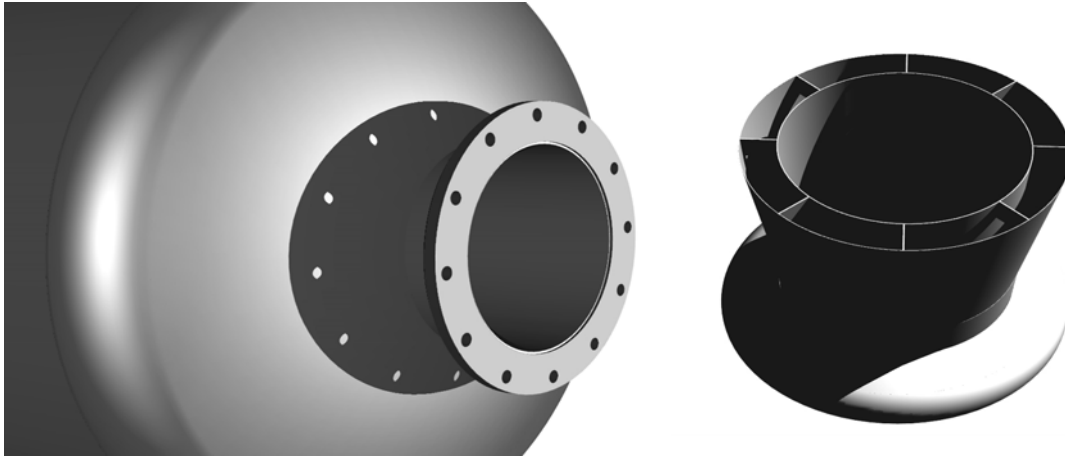
Silentor® Concept silencers

SILENTOR

Less pollution

More power

Patented technology since 1972



Silentor® Concept silencer is based on Silentor's unique and patented technology for exhaust noise attenuation – a technology created during more than 30 years research and development.

The Silentor technology combines absorptive and reflective attenuation with advanced aerodynamics in such a way that it is possible to achieve the best possible relationship between superior attenuation, low backpressure and limited volume.

Silentor® Concept silencers are available in four attenuation classes:

Simple:	20 – 25 dB
Basic:	30 – 35 dB
Classic:	40 – 45 dB
Superior:	50 – 55 dB

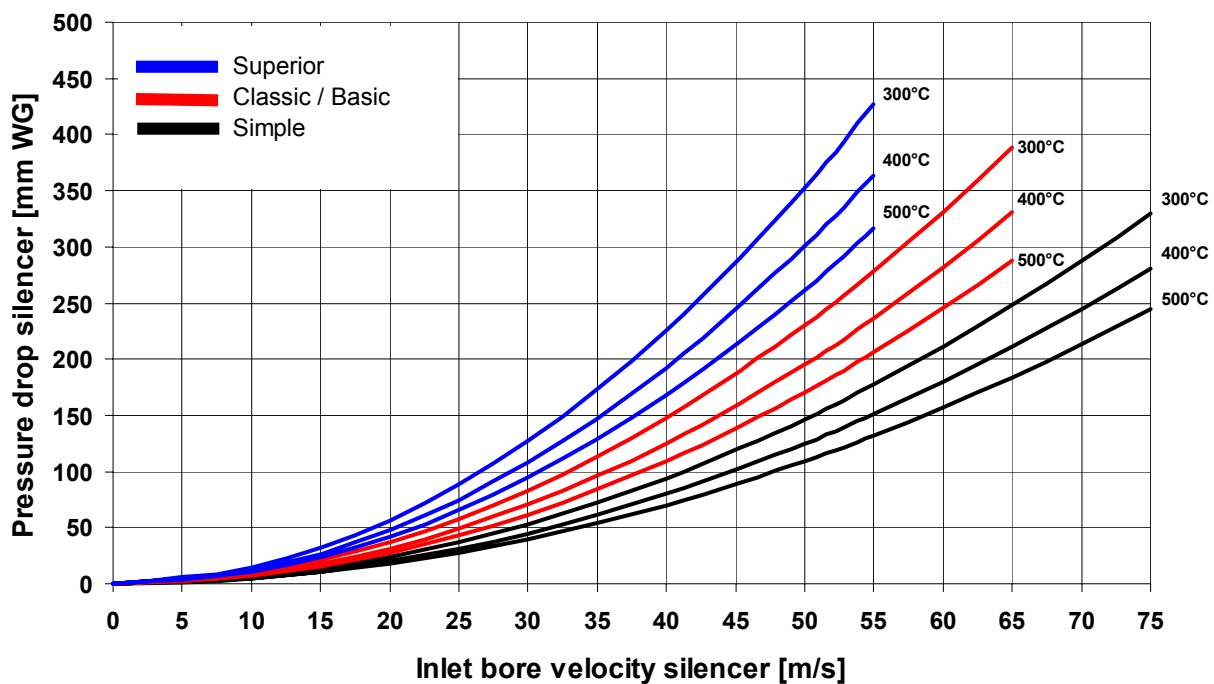
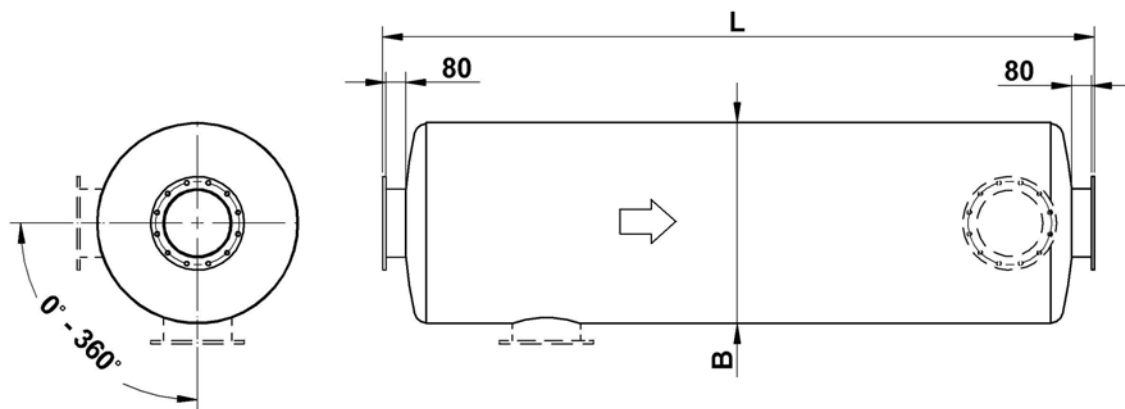
Compared to traditional silencers, the Silentor technology is special because of the ability to attenuate the low-frequency noise including the very dominant noise from the firing frequency from four stroke engines.

Silentor® Concept is the obvious choice for attenuation of exhaust noise from diesel- and gas engines for ships, offshores and vehicles, generators, and power stations.

Silentor® Concept silencers can be modified from case to case according to the customers requirement.

Technical specifications:

Attenuation:	Class 20-25dB, 30-35 dB, 40-45dB, 50-55dB
Pressure loss:	See diagram
Dimensions:	See data table. Concept silencers can be delivered in all combinations of central and side in- and outlet.
Recommended gas velocity:	See data table
Installation:	To achieve maximum attenuation it is recommended to install the silencer as close as possible to the engine.
Material:	Mild steel S235JRG2. As an option the silencers can be supplied in stainless steel.
Surface treatment:	Anticorrosive transport paint
Accessories:	Fixed flanges according to DIN86044 drilling pattern or other standards.



Type Inlet	Symbols	Simple class 20-25 dB	Basic class 30-35 dB	Classic class 40-45 dB	Superior class 50- 55 dB
DN350 14"	L [mm]:	1840	3140	3680	4340
	B [mm]:	756	756	856	1056
	Weight [kg]:	190	340	470	810
DN400 16"	L [mm]:	2030	3370	4030	4720
	B [mm]:	856	856	956	1156
	Weight [kg]:	250	420	600	990
DN450 18"	L [mm]:	2210	3620	4390	5120
	B [mm]:	956	956	1056	1256
	Weight [kg]:	320	530	800	1200
DN500 20"	L [mm]:	2420	3870	4730	5600
	B [mm]:	1056	1056	1156	1356
	Weight [kg]:	400	680	950	1430
DN550 22"	L [mm]:	2690	4190	Please contact our sales department for further information	
	B [mm]:	1156	1156		
	Weight [kg]:	530	840		
DN600 24"	L [mm]:	2970	4540		
	B [mm]:	1256	1256		
	Weight [kg]:	640	1000		
DN650 26"	L [mm]:	3250	4910		
	B [mm]:	1356	1356		
	Weight [kg]:	760	1180		
DN700 28"	L [mm]:	3510	5260		
	B [mm]:	1458	1458		
	Weight [kg]:	1080	1630		
DN750 30"	L [mm]:	3790	5630		
	B [mm]:	1558	1558		
	Weight [kg]:	1240	1880		
DN800 32"	L [mm]:	4070	6000		
	B [mm]:	1658	1658		
	Weight [kg]:	1420	2150		
DN850 34"	L [mm]:	4280	6280		
	B [mm]:	1758	1758		
	Weight [kg]:	1600	2475		
DN900 36"	L [mm]:	4570	6670		
	B [mm]:	1858	1858		
	Weight [kg]:	1850	2800		
DN950 38"	L [mm]:	4710	6920		
	B [mm]:	1958	1958		
	Weight [kg]:	2000	3100		
DN1000 40"	L [mm]:	5025	7330		
	B [mm]:	2058	2058		
	Weight [kg]:	2475	3775		
DN1100 44"	L [mm]:	5680	8190		
	B [mm]:	2210	2210		
	Weight [kg]:	3050	4625		
DN1200 48"	L [mm]:	6260	9070		
	B [mm]:	2360	2360		
	Weight [kg]:	3725	5750		
DN1300 52"	L [mm]:	6740	9690		
	B [mm]:	2512	2512		
	Weight [kg]:	4800	7300		
DN1400 56"	L [mm]:	7290	10440		
	B [mm]:	2662	2662		
	Weight [kg]:	5500	8350		
DN1500 60"	L [mm]:	7830	11180		
	B [mm]:	2812	2812		
	Weight [kg]:	6250	9450		
DN1600 64"	L [mm]:	8380	11930		
	B [mm]:	2962	2962		
	Weight [kg]:	7050	10625		
Maximum inlet gas velocity:		75m/s	65 m/s	65 m/s	55 m/s

www.silentor.com